

## IMPIEGO

Definitiva da spartitraffico.

## CLASSE DI SEVERITA'

C Energia max. contenuta: 533 KN · m

## MATERIALI

CALCESTRUZZO

$R_{cK} \geq 450$  daN/cm<sup>2</sup>

ARMATURA

Acciaio Fe B44K

## GIUNTI

Barre FeB32K, piastre e/o barre dywidag

## CONSIGLIATA PER:

Strade extraurbane di tipo III° e strade urbane primarie  
e di scorrimento in presenza di prevalente traffico medio-leggero.  
Autostrade con spartitraffico di larghezza  $\geq 2.40$  m.

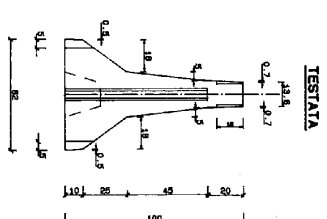
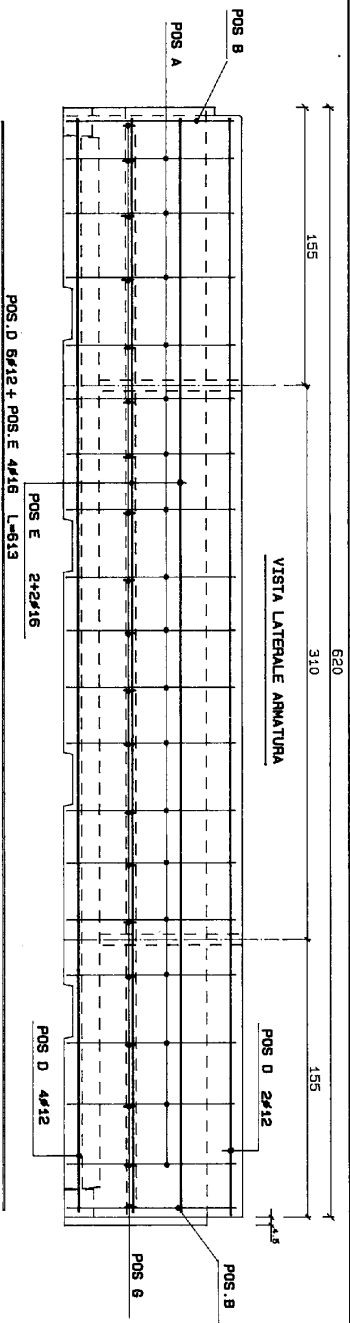
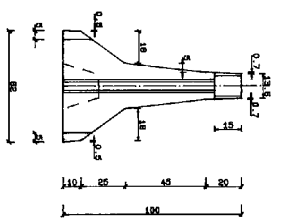
## CERTIFICAZIONE

Basata sul complesso di prove eseguite sulla pista di Anagni nel periodo gennaio 1987-aprile 1988  
e depositata globalmente presso il Ministero LL.PP. - Ispettorato Circolazione e Traffico.

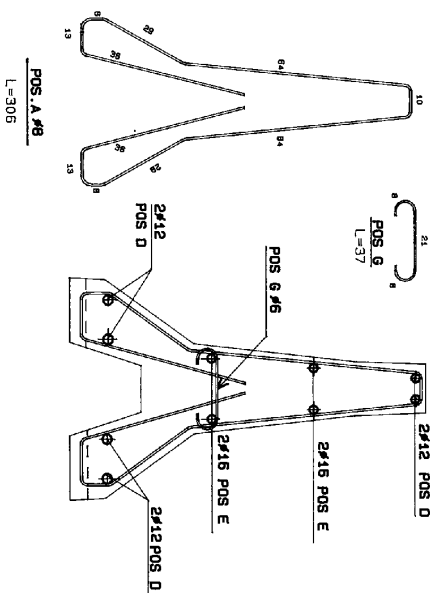
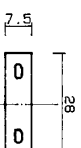
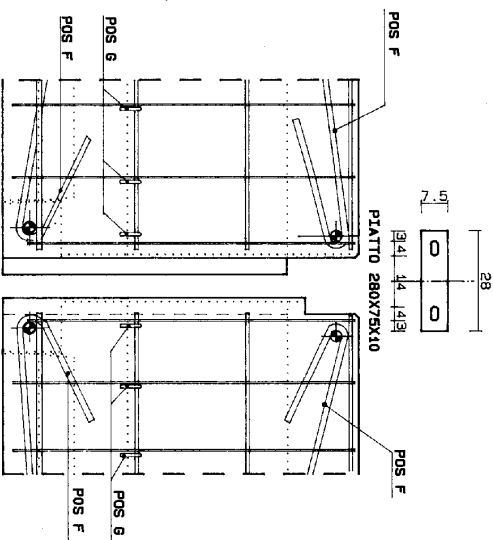
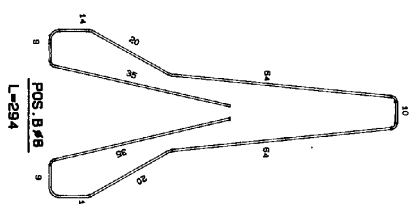
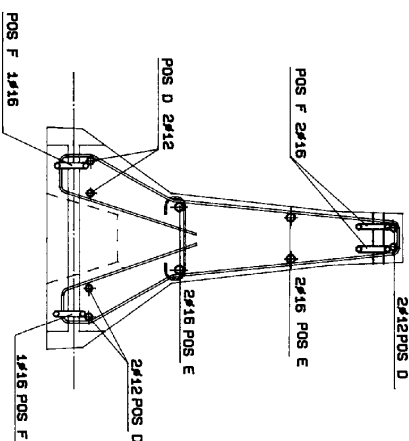


#### A.1.2 4

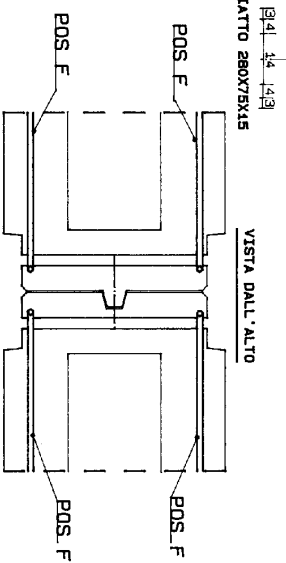
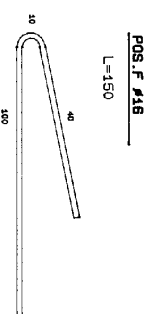
**TESTATA**



**ARMATURA ALL'ESTREMITA'**



Pos.	N.	L. unit.	L. tot.	$\phi$	Tot. Kg.
A	18	3.06	55.08	#8	21.75
B	2	2.94	5.88	#8	2.32
D	6	6.13	36.78	#12	32.65
E	4	6.13	24.52	#16	38.69
F	8	1.50	12.00	#16	18.93
G	20	0.37	7.40	#5	1.64
					115.99



## RINFORZO SUI MANICOTTI